

High performance series

Controller S-HP-E

For discrete dosage and continuous delivery



- Pump controller for discrete dosage and continuous delivery
- Compact housing
- 4-Q-DC servo amplifier
- Digital encoder regulator
- 2 analog inputs ± 10 V
- 10 digital inputs, opto-decoupled
- 5 digital outputs, open collector
- Two colored LED status indicator
- Cable set for mzs-pumps
- EEPROM memory
- RS-232, CANopen interface

The controller S-HP-E is recommended for high requirements in control of discrete dosage and continuous delivery tasks in combination with mzs-pumps mzs-7208 and mzs-11508.

The microcontroller allows speed and position control for highly accurate dosage. The compact design offers flexible installation. Process control link can be established via a RS-232 or

CANopen interface. Motor speed or flow rate can be set either by analog inputs (± 10 V). Programs for dosage control can be saved in the memory.

Technical Data

Control	PI-controller, speed and position control
Supply voltage	48 V DC (20 – 55 V)
Backup supply voltage for logic	24 V DC
Max. power output	720 W
Max. continuous output current	10 A
Max. peak output current	20 A (< 1 s)
Speed	1 – 6000 rpm
Voltage connector	header and plug, 5-pole
Pump connector	SUB-D plug, 15-pole; header and plug 5-pole
Analog inputs for motor speed	2, voltage signal ± 10 V
Digital inputs	10, opto-decoupled, high (12 ... 24 V)
Digital outputs	5, open collector max. 24 V / 15 mA
Interface	RS-232, CANopen (DSP 301, DSP 402)
Program memory	2 KB
Operating temperature range	0 ... +40 °C (32 ... 104 °F)
Protective class	IP 20
Mounting method	along the side or along the back
Measurements (L x B x H)	approx. 150 x 105 x 25,4 mm
Weight	approx. 640 g

Subject to technical changes.

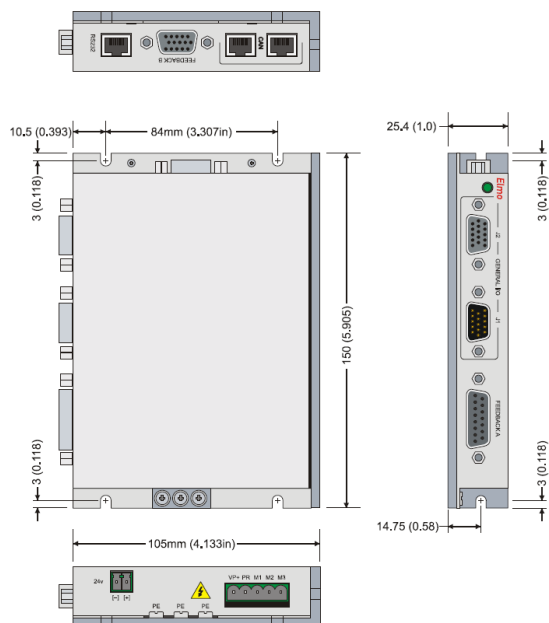
Contact

HNP Mikrosysteme GmbH
Juri-Gagarin-Ring 4 · D-19370 Parchim

phone +49| 3871| 451-301
fax +49| 3871| 451-333

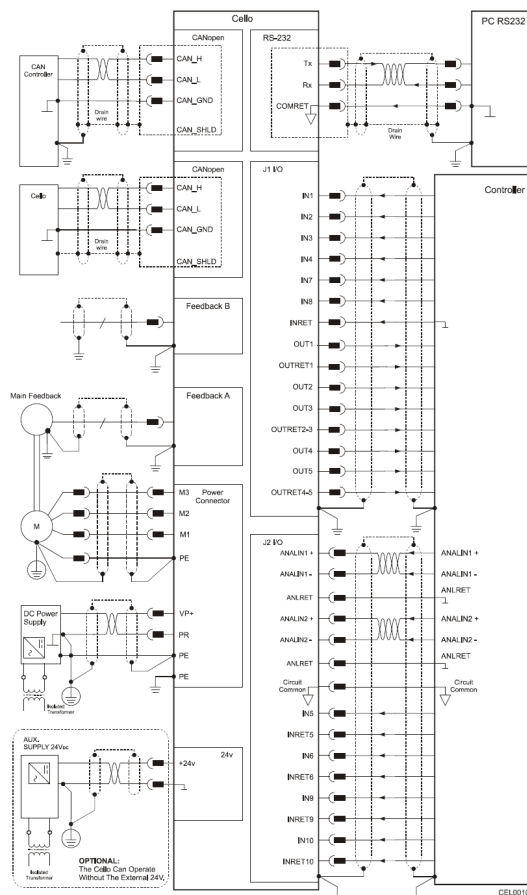
e-mail info@hnp-mikrosysteme.de
<http://www.hnp-mikrosysteme.de>

Measurements

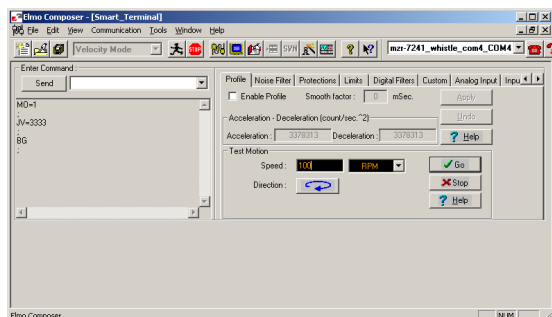


Subject to technical changes

Wiring diagram



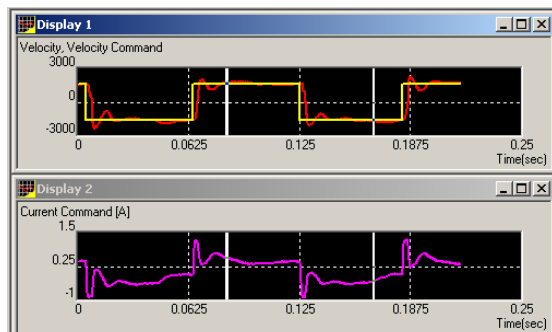
Software



All motor parameters for pump control can be set and saved with the software »Elmo Composer« operating under Windows®. The program language is ASCII-based. Dosage programs can easily be typed on a computer and transferred to the EEPROM.

Several sample programs are supplied such as the triggering of different dosage programs with the internal digital inputs.

Graphic online analysis



Sample chart for speed and motor current

Item number

66 04 01 24

controller S-HP-E for micro annular gear pumps mzs-7208 / mzs-11508, speed and position control for continuous delivery and discrete dosage tasks

66 04 01 25

cable set for controller S-HP-E